

650nm AlGaInP Visible Laser Diode

Features:

- AlGaInP Visible laser diode
- High Assembly accuracy
- Lower operation current
- High monitor current
- Rohs Compliant

Applications:

- Laser Levelers
- Industrial laser markers/measuring instruments
- Survey and engineering instruments
- Laser pointers

Optical and electrical Characteristics

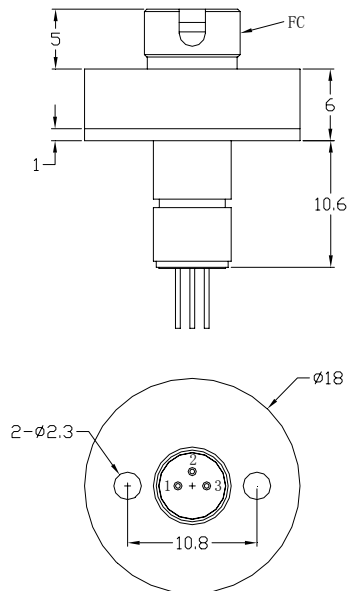
Parameter	Test condition	Symbol	Min	Typ	Max	Unit
Wavelength	Po=5mW	λ_p	645	655	660	nm
Threshold current		I _{th}		15	20	mA
Operating current	Po=5mW	I _{op}		20	22	mA
Operating voltage	Po=5mW	V _{op}		2.2	2.5	V
Output power	I _{op} =33mA	Po		1		mW
Monitor current	Po=5mW	I _m	0.1	0.15	0.3	mA

Absolute Maximum Ratings

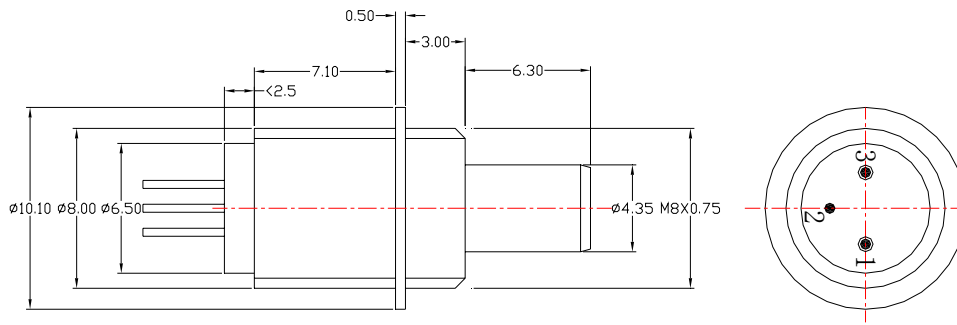
Parameter	Test condition	Ratings	Unit
Operating temperature		-10~+50	°C
Storage temperature		-40~+85	°C
Reverse voltage(LD)	CW	2.0	V
Forward Current(PD)		10	mA
Reverse voltage(PD)		30	V

Assembly Package

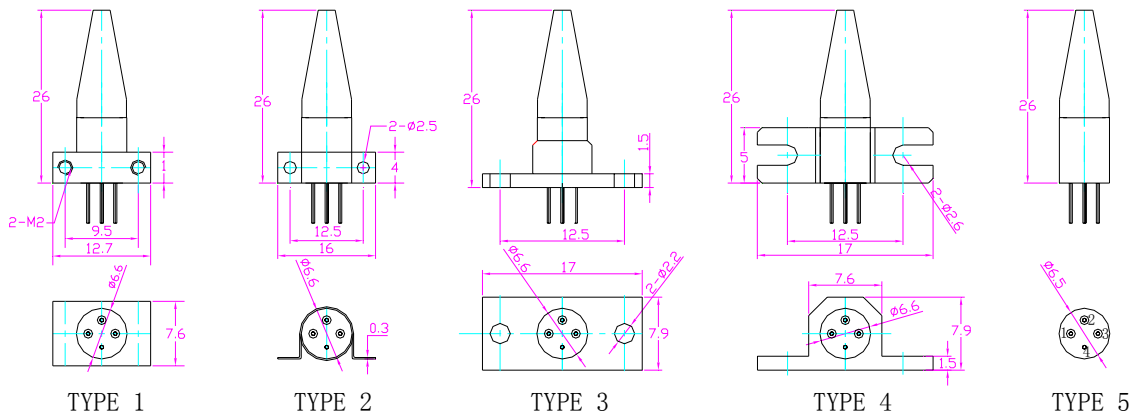
1、 FC Receptacle:



2、 FC、 ST & SC receptacle:



3、Pigtail Package



Pin Assignment

PN	Laser Diode A Type	
1	LD cathode	
2	PD Cathode/LD anode	
3	PD anode	

Pigtail-Tx

STP-ABCDEFGH

A(LD)	B(Wave)	C(Power)	D(Data rate)	F (Link)	E(Pinout)	G(Isolation)	H(fiber)
F-FP	1-650nm	1\ -10-15dBm	1\ 1.25GB/S	1-FC/PC	A	N	S single
D-DFB	2-850nm	2\ -8~-10dBm	2\ 2.5Gb/s	2-SC/PC	C	I	M5-50um
E-LED	3-1310nm	3\ -3~-8dBm	3\ 10Gb/s	3-ST/PC	E		M6-62.5um
	4-1490nm	4\ 0~-3dBm	0\ other	4-LC/PC			
	5-1550nm	5\ +3~0dBm		5-FC/APC			
	6-1625nm	6\ +6~+3dBm		6-SC/APC			
	7-CWDM	7\ >+6dBm		7-LC/APC			